

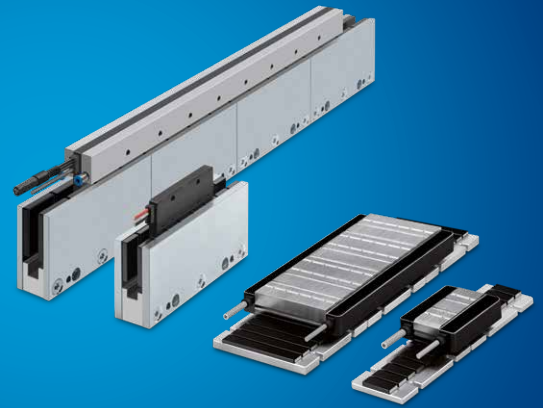


ETEL S.A.

Zone Industrielle
2112 Môtiers
Switzerland

T +41 32 862 01 00

etel@etel.ch · www.etel.ch



Linear Motors

ETEL

version 4.2 - 03/20 - subject to modifications without previous notice

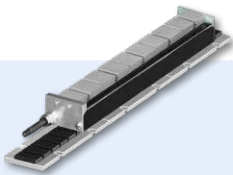
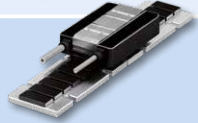
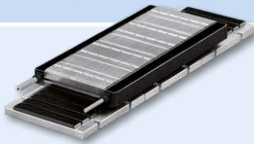
ETEL

During the last two decades, many linear motor variations have emerged on the market. Nevertheless, only a few were found to be practical, performed well and economically viable. ETEL has always remained dedicated to the flat, synchronous, 3-phase linear motors with permanent magnet excitation. This family of motors represents more than 90 percent of industrial applications worldwide.

They can be divided into two categories: ironcore and ironless motors. Based on these two technologies, ETEL developed product variants to reach optimal performance in a wide range of applications.

➤ For more information, refer to our **Linear Motors** catalog and leaflet.

IRONCORE MOTORS

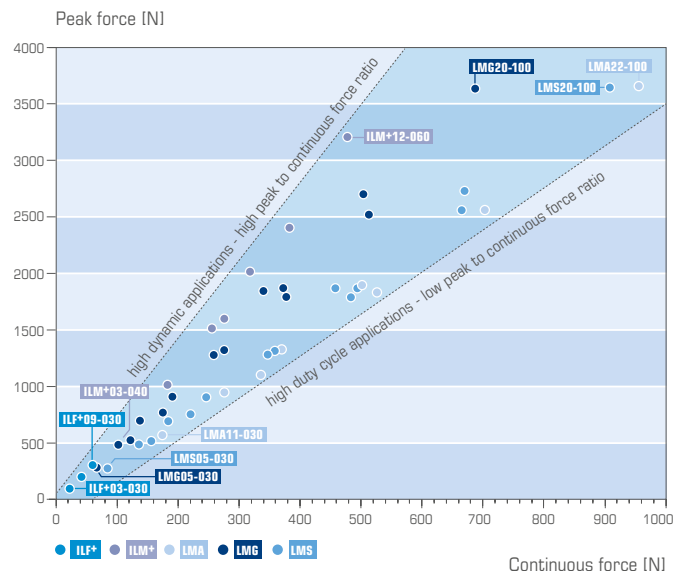
| | | |
|------------|---|---|
| LMA | <ul style="list-style-type: none"> • Highest continuous force • Optimized for high duty cycle applications • 600 VDC compliant |  |
| LMG | <ul style="list-style-type: none"> • Compact design • Economic • High peak force • 600 VDC compliant |  |
| LMS | <ul style="list-style-type: none"> • Compact design • Economic • High continuous force • 600 VDC compliant |  |

Highlights



- Speed up to 15 m/s
- Continuous force up to 956 N
- Peak force up to 3650 N
- Low force ripple
- All linear motor types work with the same MWD magnetic way

Applications

- Wafer inspection systems
- Chip placement machines
- Flip-chip / die bonders
- Wire bonders
- PCB drilling
- PCB testing machines
- Flat panel display equipment
- Medical equipment
- General automation



IRONLESS MOTORS

| | | |
|-------------|---|--|
| ILF+ | <ul style="list-style-type: none"> • Medium force • Very low mass glider • 600 VDC compliant |  |
| ILM+ | <ul style="list-style-type: none"> • High force • Low mass glider • 600 VDC compliant |  |

Highlights

- Continuous force up to 478 N
- Low glider masses down to 100 g
- Peak force up to 3200 N
- Option: forced air cooling
- No attraction force
- No force ripple

Applications

- Wafer inspection systems
- Chip placement machines
- Flip-chip / die bonders
- Wire bonders
- Very high dynamic axes
- PCB testing machines
- Air bearing systems
- CMM measuring machines
- Optical equipment manufacturing
- Medical equipment